



Plantation Bay Golf & Country Club

Located in the charming seaside town of Ormond Beach, Florida, just minutes from the ocean through a scenic drive seemingly untouched by time. When you enter Plantation Bay you notice the large trees, lakes, and plenty of green, lush landscaping.

More than just beauty, the addition of a planned back nine will bring the number of golf holes to 54 making Plantation Bay the only local community with three private golf courses. An abundance of sparkling new facilities takes this prestigious private community to luxurious new heights.

This 3600 acre community is presented by ICI Homes at Plantation Bay, an award winning developer and new home builder with over 30 years of experience in developing beautiful communities and custom built homes.

Plantation Bay is close to area shopping, state-of-the-art medical facilities, top notch schools, beaches, and restaurants.

Amenities Throughout

- Two Clubhouses with Fine Dining
- 7,000 square-foot Spa and Fitness Ctr.
- Beach Entry Resort Swimming Pool
- Heated Lap/Exercise Pool
- 10 Har-Tru Clay Tennis Courts (lighted)
- Two Bocce Ball Courts
- Prestwick Parke (7.5 acres)
- Three Golf Courses
- Walking & Biking Trails
- Community Activities

Driving Directions

Just off of I-95 in Ormond Beach, take exit 278 for "Old Dixie Highway".

Head West on Old Dixie Highway approximately 1/8 mile to Plantation Bay Golf & Country Club entrance on your left.





Golf Experience

Plantation Bay offers 45 gorgeous holes of golf that are sure to challenge and delight every player at any level. Members are presented with lush fairways, undulating greens, and a service oriented staff to ensure a great golfing experience. Being one of the area's only golf communities that allows privately owned carts, a hassle free ride home completes your day at the club.

The Club de Bonmont Course is famous for 18 matchless holes. With its recent renovation by world recognized architect Steve Smyers, the beauty and layout has the wow factor every time you step up to the tee.

The Westlake Course, the newest addition to the Plantation Bay golf experience, is a masterfully sculpted nine holes that are tied into the Club de Bonmont course to create 27 holes of pure enjoyment. With the 2nd nine holes to the course in the planning stage, Westlake is sure to be a great complement to our other golf courses.

The Prestwick Course offers an outstanding championship layout with impressive playing conditions and superb amenities. The course is a shot makers dream. With a premium on hitting your target, it is sure to challenge any level of golfer.

Tennis, Spa & Fitness Center

Fitness Center - The state-of-the-art fitness center features a complete line of Life Fitness equipment, cardio and Hammer Strength free weights, exercise classes, and personal trainers. TV's are available on each treadmill and elliptical machine.

Pools - The facility features two spectacular swimming pools; a lap pool and a zero entry resort pool.

Tennis - Plantation Bay offers 10 clay tennis courts, lighted for evening play along with two bocce ball courts.

Day Spa Services - The Plantation Bay Spa will make you feel rejuvenated with a deep tissue, Swedish, sports massage, or a soothing European or aromatherapy facial.

Social Activities

Plantation Bay has just what you are looking for - golf, tennis, swimming, bridge, Mah-Jong clubs, yoga classes, water aerobics, and much more. Special events include Vegas nights, dinner dances, name that tune, music in the park, arts and craft shows and fashion show luncheons.



Plantation Bay Preferred Builder

ICI Homes offers a wide variety of home models in Plantation Bay Golf & Country Club; Ranked in the Top 100 Builders in the nation for several years, ICI Homes has been at the forefront of the home building industry as a standard bearer of excellence.

Always on the cutting edge of Florida new home design and technology, ICI Homes takes pride in offering a wide variety of architectural styles and floorplans to match your lifestyle and price range.

Because ICI Homes has built thousands of homes, from affordable villas to breathtaking mansions, ICI Homes benefits from a volume purchasing advantage that ensures your home is built with the best quality materials at the greatest value for your money.

The trust you place in ICI Homes is reciprocated by our professional staff of "hands on" sales consultants, designers, builders, and managers.

Explore Your Options

Choose from a portfolio of award winning designs and add a detached guest suite, an upstairs bonus room, a balcony or a cabana bath. Enhance your Florida outdoor living experience with a swimming pool or heated spa, a casita or a summer kitchen. The possibilities are endless.

Have it Your Way... Exactly

ICI Homes makes it simple and convenient to get precisely what you want – without adding substantial costs to the bottom line. Any plan large or small can be customized to your exact specifications. Add square footage, blend elements from different plans, move a wall or completely design a plan from the ground up. It is all part of the company culture.

Estate Homes - From the mid \$300s

Single-Family Homes - From the low \$200s

Townhomes - From the high \$100s

Discovery Experience

Few communities offer the kind of lifestyle that's come to be expected at Plantation Bay. Like-minded residents from across the country appreciate the unhurried pace, year-round warm weather, convenient shopping and lower cost of living.

Words and pictures can only tell you part of the story. To get the full experience, we invite you to come visit and see for yourself everything Plantation Bay has to offer. While staying in one of our on-site condos, you can dine in the full service clubs, play golf on our private golf courses, play tennis day or night on our lighted courts, relax by the pool or get your heart pumping in our fitness center.

Discovery Experience Package Includes a 3 Day/2 Night Stay - Call 877.628.5236 for details



To Book Your Discovery Experience
877.628.5236 or PlantationBayGolf.com



Plantation Bay

Club de Bonmont - 386.437.4844 x13
Prestwick - 386.437.6664 x13

Fusion 43

43 W. Granada Blvd., Ormond Beach
386.615.7673

Stonewood Grill and Tavern

100 S Atlantic Ave., Ormond Beach
386.671.1200

Plantation Bar & Grill

3754 Roscommon Dr., Ormond Beach
386.615.8948

Panera Bread

Hwy 100, Palm Coast
386.313.5919

Takeya Japanese Steak House

220 Williamson Blvd., Ormond Beach
386.615.7600

LuLus Oceanside Grill

305 S. Atlantic Ave., Ormond Beach
386.673.2641

La Fiesta

348 N. Nova Rd., Ormond Beach,
386.256.4829

Flagler Fish Company

180 S. Daytona Ave., Flagler Beach
386.439.0000

Billy's Tap Room

58 E. Granada Blvd., Ormond Beach
386.672.1910

Local Attractions

Daytona Beach - For a faster pace, venture south where one of the nation's great vacation spots provides entertainment, shopping, dining, the world famous beach, and Daytona International Speedway.

Marineland - In nearby St. Augustine is the world's first "oceanarium" and is known for dolphin shows and aquarium displays.

Flagler Auditorium - Located in Palm Coast, this theater seats up to 1,000 people for drama, music and dance performances.

Palm Coast Town Center - The Town Center development includes office, medical office and retail commercial developers, beautiful parks, a 14 theatre Cinema Complex, and more.

St. Augustine - North of Ormond Beach, the nation's oldest city provides a picturesque escape into the history of Florida. Brick streets lead you to historic churches, living history museums, antique stores, charming restaurants, horse drawn tours, unique shops and divine art galleries.

Ormond Memorial Art Museum & Gardens - Offers exhibitions of Florida, regional, national and international artists. Additionally, the OMAM seeks to advance the appreciation of the arts through classes, lectures & demonstrations.

Tomoka State Park - Tomoka contains a variety of wildlife habitats and protects several rare and endangered species. The best known animal in the park is the West Indian manatee. Manatees are seen in the Tomoka River and tributary creeks in spring and summer.

Local Schools & Medical Centers

Volusia County Public Schools **Pathway Elementary School**

Grades K-5 - 386.258.4671

David Hinson Middle School

Grades 6-8 - 386.258.4682

Seabreeze High School

Grades 9-12 - 386.258.4674

Flagler County Public Schools **Bunnell Elementary School**

Grades K-5 - 386.437.7533

Buddy Taylor Middle School

Grades 6-8 - 386.446.6700

Flagler-Palm Coast High School

Grades 9-12 - 386.437.7540

Local Medical Centers **Halifax Medical Center**

303 N. Clyde Morris Boulevard
Daytona Beach - 386.254.4000

Florida Hospital Mem. Medical Ctr.

301 Memorial Medical Parkway
Daytona Beach - 386.231.6000

Florida Hospital Flagler

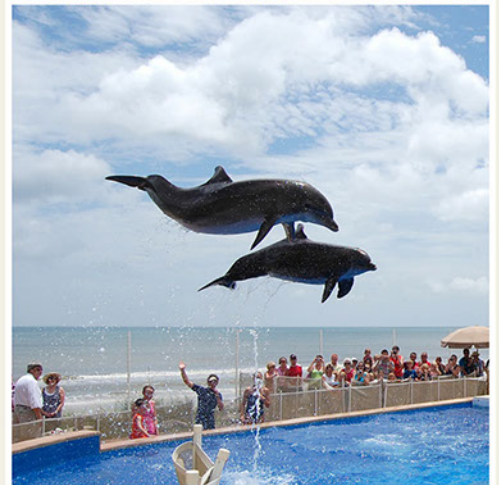
60 Memorial Medical Parkway
Palm Coast - 386.586.2000

Childrens Medical Center

200 Booth Road
Ormond Beach - 386.523.1212

Halifax Health - Ctr. for Oncology

1688 West Granada Boulevard
Ormond Beach - 386.651.4400



Homeowners Dues

Plantation Bay Community Association Single Family, Volusia County

Quarterly - Master.....	\$285.00	
Capital Contribution.....	\$570.00	(One time at Closing)
Transfer Fee.....	\$125.00	(One time at Closing)

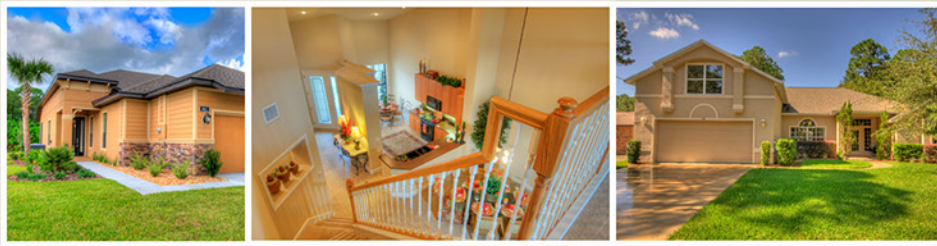
Prestwick Townhomes Townhomes, Volusia County

Quarterly - Master.....	\$285.00	
Monthly Dues - Sub.....	\$130.00	
Capital Contribution-Master & Sub.....	\$1350.00	(One time at Closing)
Transfer Fee - Master & Sub.....	\$175.00	(One time at Closing)

Westlake at Plantation Bay Single Family, Flagler County

Quarterly - Master.....	\$165.00	
Capital Contribution.....	\$330.00	(One time at Closing)
Transfer Fee.....	\$75.00	(One time at Closing)
Tomoka CDD and Operations.....	\$1,209.00	(Yearly on Tax Bill)

Gate Transponders..... \$25.00 Each



Membership Information

Full Golf Membership

- Unlimited Golf on all 45 holes
- Unlimited Access to Spa & Fitness
- 10 Har-Tru Tennis Courts
- Fitness Pool and Resort Pool
- Two Clubhouses/Dining Events
- Membership for all future golf
- Ability to use your own golf cart

Fees

- Initiation Fee: \$12,000
- Annual Membership Dues:
\$6,500 Family - \$4,750 Single
- Food & Beverage Minimum:
\$900 Family - \$500 Single
- Annual Trail Fee:
\$2,625 Family - \$1,850 Single
- Annual Cart Rental:
\$3,100 Family - \$2,350 Single

Sports Membership

- Unlimited Access to Spa & Fitness
- 10 Har-Tru Tennis Courts
- Fitness Pool and Resort Pool
- Two Clubhouses/Dining Events
- Limited Golf Privileges
(Six Rounds of Golf - non peak)

Fees

- Initiation Fee: \$1,000
- Annual Membership Dues:
\$1,560 Family - \$1,200 Single
- Food & Beverage Minimum:
\$700 Family - \$500 Single

Golf Guest Fee:
\$70.00, Nov-May, \$50.00 Jun-Oct
Cart Fee: \$23 Member and Guest

Helpful Phone Numbers

Welcome Center - 386.437.4164

Club de Bonmont

Pro Shop - 386.437.4776 x10
Restaurant - 386.437.4844 x13

Prestwick

Pro Shop - 386.437.6664 x10
Restaurant - 386.437.6664 x13

Fitness Center - 386.236.4291

Security Gates

North Gate (Old Dixie) - 386.437.2496
South Gate (US 1) - 386.437.5680

Tax Info

Flagler County - flaglerpa.com
Volusia County - webserver.vcgo.org

Cable TV, Internet & Phone

Brighthouse Networks - 386.445.5465

Electric

Florida Power Corporation - 800.226.3545

Water/Sewer

City of Bunnell - 386.437.7500

Trash/Recycling Collection

Waste Pro (Flagler County) - 386.586.0800
Volusia County - 386.257.6021

Fitness Membership

- Unlimited Access to Spa & Fitness
- Fitness Pool and Resort Pool
- Two Clubhouses/Dining Events

Fees

- Initiation Fee: \$500
- Annual Membership Dues:
\$1,250 Family - \$875 Single
- Food & Beverage Minimum:
\$700 Family - \$500 Single

Social Membership

Two Clubhouses/Dining Events

Fees

- Initiation Fee : \$100
- Annual Admin Fee: \$300
- Food & Beverage Min: \$500