

Jayco | Jay Feather Travel Trailer

# JAY FEATHER

ADVENTURE IS CALLING



**2+3**  
YEAR | YEAR  
WARRANTY



# INTERIOR DESIGN



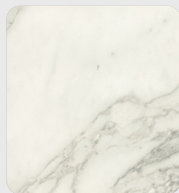
## VINTAGE WASHED GREY



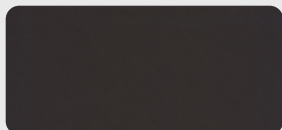
Wood



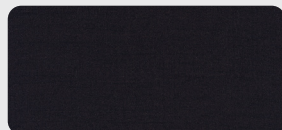
Floor



Countertop



Main Fabric

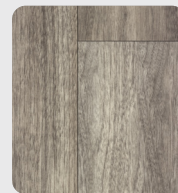


Accent Fabric

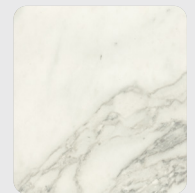
## MODERN FARMHOUSE



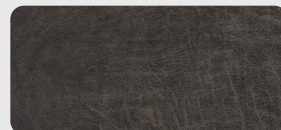
Wood



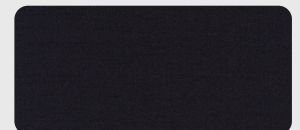
Floor



Countertop



Main Fabric



Accent Fabric



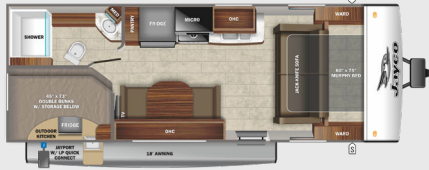


# JAY FEATHER

X213



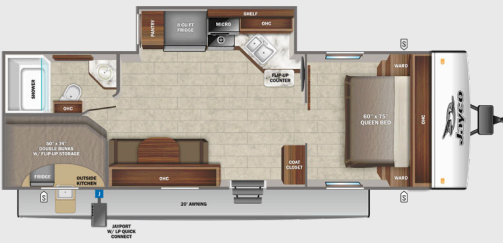
20MBH



21MML



22BH



22RB

OPTIONS: B, C



24BH

OPTIONS: B, C



24RL

OPTIONS: A, B



25RB

OPTIONS: A, B



26RL

OPTIONS: A



27BHB

OPTIONS: A, B



30QB

OPTIONS: B, C



-  STORAGE
-  MICRO MICROWAVE
-  OHC OVERHEAD CABINETS
-  FRIDGE REFRIGERATOR
-  WARD WARDROBE

## OPTIONS

A



Tri-Fold Sofa

B



Theater Seat

C



L-Lounge

# STANDARDS & OPTIONS

## EXTERIOR

Aerodynamic, rounded front profile with diamond plate  
Modern retro graphics package with two-colored sidewall  
Stronghold VBL™ vacuum-bonded, laminated side and rear walls (including slideout room walls)  
Azdel laminated interior and exterior walls  
2 in. vacuum-bonded floor with 2 lb. foam insulation  
Keyed-Alike™ lock system  
Magnum Truss™ Roof System with one-piece seamless roof material with 20 year warranty  
American-made frame with integrated A-frame  
Dual axles  
G20 tinted safety-glass windows  
Marine-grade exterior speakers with blue LED accent lighting (2)  
Galvanized steel and impact-resistant wheel wells  
30-amp service  
Outside grill propane quick-connect port  
Aluminum tread entry steps (MORryde® StepAbove™ standard on 22RB, 24BH & 25RB)  
Outside camp kitchen (standard on select models)  
Battery quick disconnect  
Slide topper prep (select models with slide rooms)  
Exterior TV bracket with 120V electric and cable outlets

## INTERIOR

Choice of two interior design packages- Modern Farmhouse or Vintage Washed Grey  
LED lighting throughout  
Smoked glass decorative inserts (select overhead cabinets)  
Screwed and glued cabinetry  
Residential vinyl flooring with cold crack resistance  
Plywood dinette, bunk and bed bases (applicable models)  
Ball-bearing drawer guides with 75 lb. capacity  
6 cu. ft. gas/electric refrigerator

Residential oven with 3-burner recessed cooktop and glass cover  
Residential-style kitchen countertops  
Microwave  
Decorative backsplash  
4 in. high-density dinette cushions with vinyl backing  
Jayco exclusive Teddy Bear "soft-touch" residential-style bed mats (select models)  
120V outlet and cargo net in fixed bunks  
Plastic foot flush toilet  
Bath skylight and roof vent  
Wood panel fridge inserts

## CUSTOMER VALUE PACKAGE (MANDATORY)

American-made nitro-filled Goodyear® radial tires with self-adjusting electric brakes  
Aluminum rims  
20 lb. propane bottles with auto regulator (2)  
14,500 BTU A/C  
Spare tire  
Detachable power cord  
Power awning with LED lights  
Black tank flush  
Outside shower  
Power tongue jack  
Manual stabilizer jacks (4)  
6 gal. gas/electric DSI water heater  
55 gal. fresh water tank  
AM/FM/Bluetooth® stereo  
Side-marker camera prep  
Rear camera backup prep  
360° Siphon® roof vent cap  
Inverter pre-wire

## SPORT PACKAGE (MANDATORY)

Aluminum tread entry steps  
Enhanced graphics package  
Front molded fiberglass cap  
JaySMART™ (Safety Markers And Reverse Travel)  
LED lighting (patent-pending)  
Roof-mount solar prep  
Glacier Package includes enclosed underbelly  
32 in. or 40 in. LED TV  
Drying rack/sink cover  
Power roof vent (main living area)

## OPTIONS

120V heated tank pads  
50-amp service with 2nd A/C prep (select models)  
30 lb. propane bottles with auto regulator (2) (select models)  
MORryde® StepAbove™ entry steps on main entrance (standard 22RB, 24BH & 25RB)  
8 cu. ft. 12V refrigerator  
New JAYCOMMAND® "Smart RV" system (includes TPMS)  
Tri-fold sofa with table trays (select models)  
Theater seating (select models)  
L-lounger sofa in place of U-dinette (22RB, 24BH & 30QB)  
Solar Power Package with 190W roof-mounted solar panel  
Outside griddle for JayPort system (standard on models with an outside kitchen)

\*Indicates split tanks

FLOORPLAN	EXTERIOR TRAVEL LENGTH	EXTERIOR WIDTH	EXTERIOR HEIGHT (WITH A/C)	INTERIOR HEIGHT	UNLOADED VEHICLE WEIGHT	DRY HITCH WEIGHT	GVWR	CARGO CARRYING CAPACITY	FRESH WATER CAPACITY (INCLUDING WATER HEATER)	GRAY WASTE WATER CAPACITY	BLACK WASTE WATER CAPACITY	SLEEPING CAPACITY
X213	24' 2"	8' 0"	10' 3"	6' 6"	4,625	495	5,500	875	61	30.5	22.5	6-9
20MBH	TBD	TBD	TBD	TBD	TBD	TBD	TBD	TBD	TBD	TBD	TBD	4-6
21MML	TBD	TBD	TBD	TBD	TBD	TBD	TBD	TBD	TBD	TBD	TBD	3-4
22BH	TBD	TBD	TBD	TBD	TBD	TBD	TBD	TBD	TBD	TBD	TBD	5-7
22RB	27' 9"	8' 0"	10' 8"	6' 6"	5,655	660	6,750	1,155	61	20.5	22.5	2-3
24BH	30' 2"	8' 0"	10' 9"	6' 6"	6,080	695	7,500	1,420	61	61*	30.5	6-8
24RL	28' 7"	8' 0"	10' 8"	6' 6"	5,360	650	6,500	1,140	61	30.5	30.5	4-6
25RB	30' 8"	8' 0"	10' 8"	6' 6"	5,825	660	7,250	1,425	61	53*	22.5	4-6
26RL	TBD	TBD	TBD	TBD	TBD	TBD	TBD	TBD	61	TBD	TBD	4-5
27BHB	33' 2"	8' 0"	10' 9"	6' 6"	6,370	745	7,600	1,230	61	61*	30.5	8-9
30QB	37' 0"	8' 0"	10' 11"	6' 6"	7,295	835	8,500	1,205	48	61*	30.5	7-10

Meet your Jayco Dealer



Scan QR code for specification definitions

Some specs at the time of print may include estimates. For the most updated information, please visit [Jayco.com/jay-feather](http://Jayco.com/jay-feather)

Jayco, Inc. | P.O. Box 460 | Middlebury, IN 46540

See dealer for further information and prices. All information in this brochure and on [www.jayco.com](http://www.jayco.com) is the latest available at the time of publication approval. Jayco reserves the right to make changes and to discontinue models without notice or obligation. Photography may show optional equipment or props used for decoration purposes only. RVs built for sale in Canada may differ to conform to Canadian codes. JAYCO and the JAYCO BIRD IN FLIGHT are registered trademarks of Jayco, Inc. Printed in USA 11/21 ©2021 Jayco, Inc. 257074



Jayco - Part of the Jayco Family of Companies